

Setting Apart:

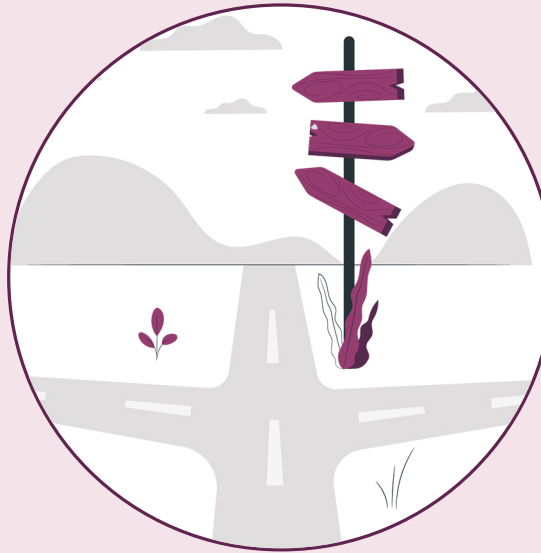
Good Position Leaders from Managers and People from Leaders



Quality 1:

Big Picture (BP)

See the bigger picture by 'stepping back', 'taking the helicopter view' or 'think strategically'.



Quality 2:

Big Decision (BD)

It's easier and particular in a company with a blame culture, not to decide left or right, but you must.



Quality 3:

Big Belief (BB)

Once you make the big decision you need to hold firm. Not swayed by self-doubt and constantly changing direction.